



MEET THE MAKER

JESSICA DENNIS BUSH



Artist Jessica Dennis Bush works in oil, wax and collage to create works of encaustic painting that explore ideas of memory and place. The full-time artist, who lives in Wheaton with her husband and four children, has a thriving practice of pieces commissioned by clients and interior designers as well as her own explorations. jessicadennisbush.com

How do you work on a commissioned piece?

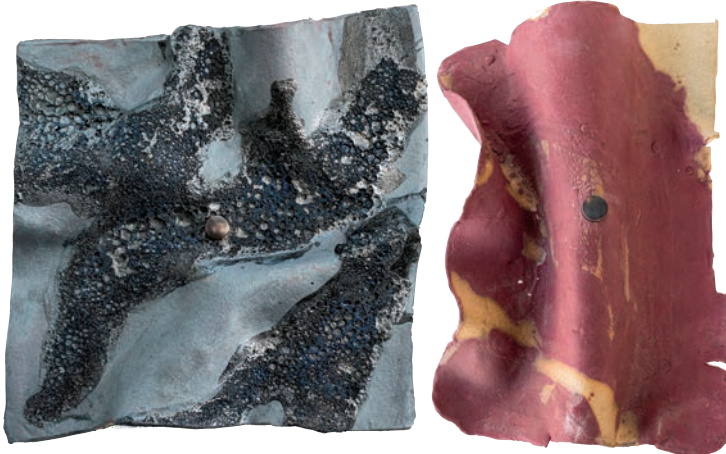
I connect to my past through collage materials, which is a powerful way to tell a story, even if the viewer doesn't know the story. For a client, I incorporate memorabilia or history through paper and weave those pieces into a painting using wax. It's the idea of a window into the past as you look through the wax to see the collage elements.

What's next? I'm experimenting with textiles and surface patterns by taking snippets of my work and repeating them in different ways to create these vibrant and unique patterns. I'm also looking at textiles as a direction to explore.

COLLABORATION

STUDIO GILD +
CAROLINE BLACKBURN CERAMICS

The scone collaboration between Chicago- and L.A.-based interior design firm Studio Gild and ceramicist Caroline Blackburn got its start on Instagram. Blackburn DM'd Melissa Benham, one of three principals at Studio Gild, and asked her to look at her work. Benham did, loved what she saw and the two connected in real life. "Caroline's work stood out to us as being very different; there's a painterly quality to it," Benham says. Studio Gild began offering Blackburn's pieces through its online store and placing them in clients' homes, and soon the idea of a collaboration surfaced. "We asked, 'You make shallow bowls, could they be sconces?'" Benham relays. "Next thing we knew, Caroline had turned around five prototypes." Those prototypes became the initial offering, with plans for other produced and custom lights. "We don't want to repeat anything, but we can show a customer an idea and personalize it," Benham says. "I'd love to use two not-quite-identical sconces on either side of a mirror or cluster a few to combine art and light." studiogild.com



CHECK IN

THE LASALLE CHICAGO

The top five floors of the 1914 Daniel Burnham-designed designated landmark building in the financial district—originally known as the Continental and Commercial National Bank—are becoming The LaSalle Chicago, Autograph Collection. DiLeonardo International and Chipman Design Architecture collaborated on this new luxury hotel, which is scheduled to open this spring at 208 S. LaSalle Street. The design honors both the original La Salle Hotel as well as the building's Art Deco style. "There are subtle Art Deco influences infused through materials, artwork, furniture and accessories," says Giana DiLeonardo, partner at DiLeonardo International. "The aesthetic is really a nod to old Chicago's movers and shakers and the environments that evolved around them." thelasallechicago.com